

# search for the unconventional.



florence / piazza san paolino  
twenty five hours hotel

# cooler than gelato.

## overview

---

- 171 rooms
- free high-speed wifi throughout the hotel
- San Paolino restaurant with courtyard
- COMPANION Dolce Amaro Bar
- Alimentari
- event venue for xx participants
- outdoor sauna & relaxation
- technogym equipped fitness room
- 25hours things shop

## public areas

---

- San Paolino restaurant
- COMPANION Dolce Amaro Bar
- Alimentari



**florence / piazza san paolino**  
twenty five hours hotel

# conference packages

3

## basic package

always included

- \_ pad & pencil projector and screen or flat screen (depending on the conference room)
- \_ 1 whiteboard/pin board (covered on both sides)
- \_ 1 flipchart with paper and pens
- \_ 1 moderator's toolkit
- \_ free high-speed Wi-Fi
- \_ personal support during the conference

---

additional conference equipment  
available on request

## half-day packages

- \_ coffee station half day
- \_ nespresso coffee maker
- \_ 2-course lunch

---

eur 50 per person

- \_ coffee station half day
- \_ nespresso coffee maker
- \_ 3-course lunch

---

eur 60 per person

## full-day packages

- \_ coffee station full day
- \_ nespresso coffee maker
- \_ 2-course lunch

---

eur 60 per person

- \_ coffee station full day
- \_ nespresso coffee maker
- \_ 3-course lunch

---

eur 70 per person

**bada bing,  
bada boom.**



**florence / piazza san paolino**  
twenty five hours hotel

# cinema paradiso

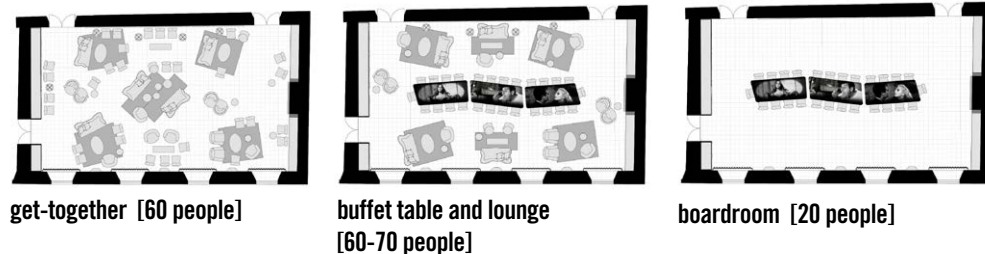
5



## overview

Cinema Paradiso is located on the ground floor and overlooks an inner courtyard. The 120 sqm room is equipped with a retractable maxi screen and a fireplace. The pictures in the room become a table seating up to 20 people.

## facts



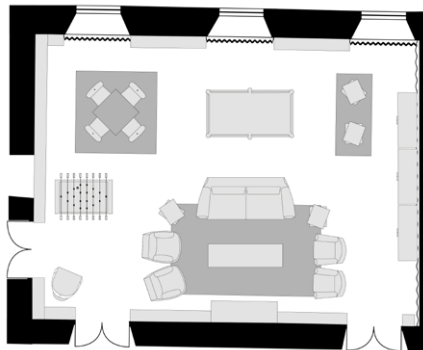
size	room capacity [max. capacity]	equipment	minimum number of attendees
— 120sqm	— get-together [60 people] — buffet table and lounge [60-70 people] — boardroom [20 people] — rows of chairs [60 people] — u-shape [15 people]	— dp2k-8ssmall dlp barco alchemy cinema projector (6,000 lumens) — screen 4.50 x 2.50 m	

room rental	half day: full day: evening events:	eur 850 (minimum turnover eur 650) eur 1.500 (minimum turnover eur 850) eur 1.200 (minimum turnover eur 700)
-------------	---	--



# sala delle celesti armonie

6



get-together [18 people]

## overview

The Sala de la Celesti Armonie is located on the ground floor overlooking the courtyard. The **xx** sqm room is equipped with fireplace, pool table and record player.

## facts

size	room capacity [max. capacity]	equipment	minimum number of attendees
— 82sqm	— get-together [35 people]	— daylight — pool table — table soccer — fireplace — sofa and armchairs	

room rental

half day:

full day:

evening events:

eur 800 (minimum turnover eur 400)

eur 1.300 (minimum turnover eur 750)

eur 1.200 (minimum turnover eur 600)

# stanza di bacco

7



## overview

The Stanza di Bacco with the adjacent wine cellar is located on the ground floor with direct access to the Ristorante San Paolino. The 19 sqm room is equipped with a large wooden table.

## facts

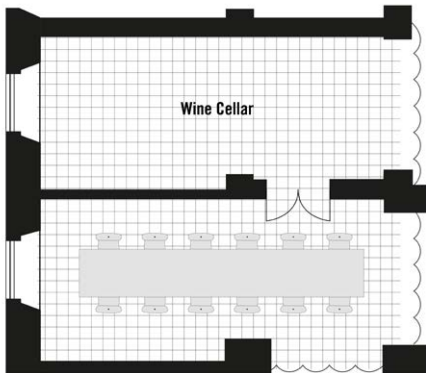
size	room capacity [max. capacity]	equipment	minimum number of attendees
— 19sqm	— boardroom [12 people]	— Samsung 65“ led tv	

### room rental

half day: eur 200 (minimum turnover eur 150)

full day: eur 300 (minimum turnover eur 200)

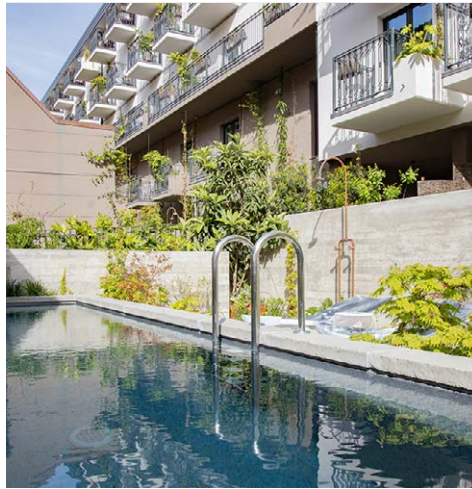
evening event: eur 200 (minimum turnover eur 150)



boardroom [12 people]

# casetta del giardino

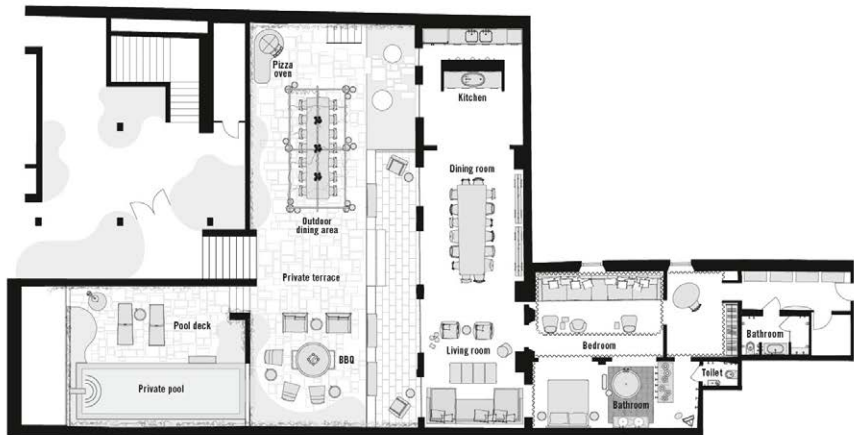
8



## overview

The 200 sqm apartment is complete with a swimming pool, private terrace and its own entrance from Piazza Ognissanti. It boasts a fully-equipped kitchen, a pizza oven, an outdoor barbecue and a table for 14 people.

## facts



casetta del giardino

size	room capacity [max. capacity]	equipment	minimum number of attendees
— 200sqm	— get-together [35/80 people] — boardroom [14 people]	— Samsung 55" led tv — fully-equipped kitchen — pizza oven — outdoor barbecue	— 5 people
room rental	low season: high season: evening event:	eur 1.500 (minimum turnover eur 1.000) eur 3.000 (minimum turnover eur 1.500) eur 2.500 (minimum turnover eur 1.200)	



# ristorante san paolino

9



## overview

The restaurant is situated in the green centre of the hotel under the huge glass cupola. The menu combines popular, traditional Tuscan dishes and modern Italian cuisine using only fresh, local produce from the region.

## facts

size	room capacity [max. capacity]	equipment	minimum number of attendees
— 220sqm	— existing set-up [105 people]		
room rental	low season: high season:	eur 5.000 (minimum turnover eur 4.000) eur 10.000 (minimum turnover eur 6.500)	

# piazza san paolino

10



## overview

Having an Aperitivo in a piazza is a true Italian classic. But have you ever had the whole square to yourself? Surprise your friends, colleagues or relatives with an exclusive event in the Piazza San Paolino.

## facts

size	room capacity [max. capacity]	equipment	minimum number of attendees
— 50sqm	— existing set-up [50 people]		
rental	evening event:	eur 2.500 (minimum turnover eur 1.500)	



# cinema paradiso + courtyard

11



## overview

Cinema Paradiso is located on the ground floor and overlooks the inner courtyard. Together the room and courtyard allow for event with a maximum capacity of 80 people.

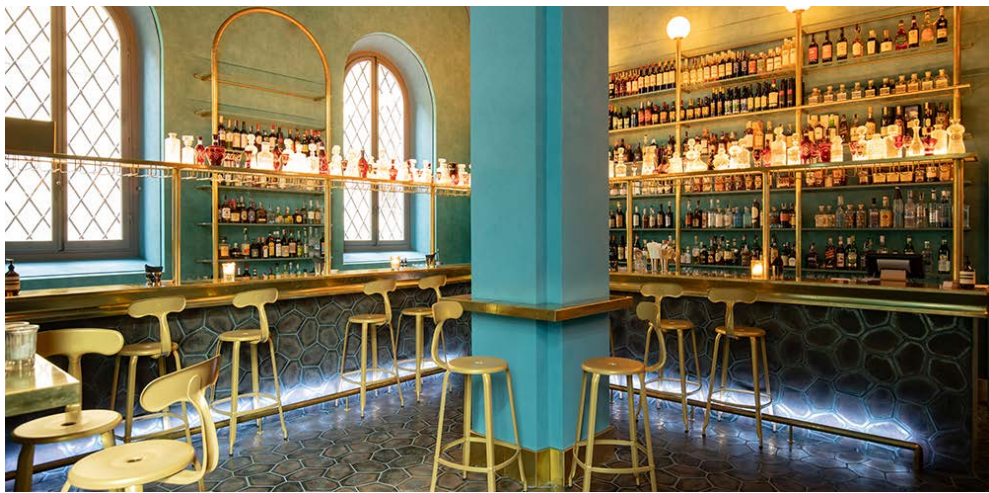
## facts



size	room capacity [max. capacity]	equipment	minimum number of attendees
— 300sqm	— existing set-up [80 people]		
room rental	evening event:	eur 5.000 (minimum turnover eur 3.000)	

# COMPANION dolce amaro bar

12



## overview

The Companion Bar Dolceamaro, in typical Florentine style with a modern twist, is the ideal place for an exclusive event.

## facts

size	room capacity [max. capacity]	equipment	minimum number of attendees
— 62sqm	— existing set-up [50 people]		
rental	evening event:	eur 2.500 (minimum turnover eur 1.500)	



# rooms

## medium (inferno & paradiso)

- \_ 21-24sqm
- \_ king-size or twin beds
- \_ free minibar
- \_ UE Boom Bluetooth speaker
- \_ in-room FREITAG or canvasco bag
- \_ bag
- \_ smart TV
- \_ telephone

## medium with balcony (inferno & paradiso)

- \_ 21-24sqm
- \_ king-size or twin beds
- \_ balcony
- \_ free minibar
- \_ UE Boom Bluetooth speaker
- \_ in-room FREITAG or canvasco bag
- \_ smart TV
- \_ telephone

## large with private garden (inferno)

- \_ 23-27sqm
- \_ king-size or twin beds
- \_ garden (or terrace)
- \_ free minibar
- \_ coffee maker
- \_ UE Boom Bluetooth speaker
- \_ in-room FREITAG or canvasco bag
- \_ smart TV
- \_ telephone





# rooms

## extra large (inferno & paradiso)

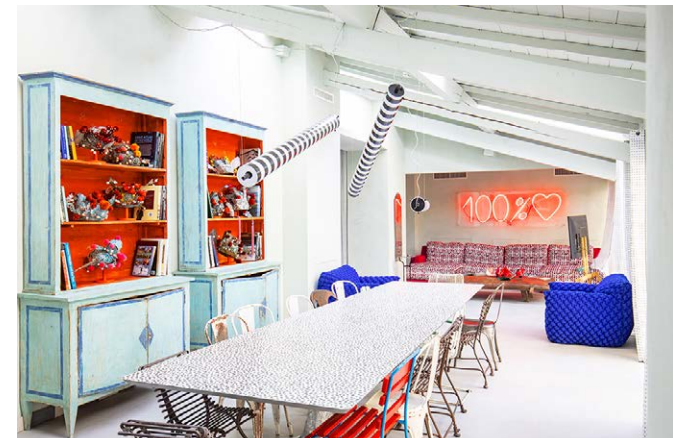
- \_ 30-35sqm
- \_ king-size or twin beds
- \_ free minibar
- \_ coffee maker
- \_ samova tea
- \_ UE Boom Bluetooth speaker
- \_ in-room FREITAG or canvasco bag
- \_ smart TV
- \_ telephone

## gigantic (inferno & paradiso)

- \_ 45-54sqm
- \_ king-size or twin bed
- \_ lounge area
- \_ free minibar
- \_ coffee maker
- \_ samova tea
- \_ UE Boom Bluetooth speaker
- \_ Schindelhauer bike
- \_ in-room FREITAG or canvasco bag
- \_ smart TV
- \_ telephone

## casetta der giardino

- \_ roughly 200sqm indoor space and just as much garden
- \_ private entrance from the street
- \_ king-size bed
- \_ terrace with private pool
- \_ free minibar
- \_ kitchen
- \_ coffee maker
- \_ samova tea
- \_ pizza oven and barbecue
- \_ UE Boom Bluetooth speaker
- \_ smart TV
- \_ telephone
- \_ Schindelhauer bike



# event ideas

## pop-up

The patterns have been returned to the drawers, the sewing machine is now gathering dust. And the most important thing: The first collection is ready to wear. Before you take it to Milan, Paris, or London, how about your own pop-up at one of our 25hours Hotels? Even the biggest designers started small and unconventionally and presented their pieces to the public. Or is there a new product launch in the pipeline? Thanks to our locations in the major cities in Germany, Austria, and Switzerland, the potential customer base is already present and won't miss your pop-up.



## product launch

From lip balm, to the new novel series, right up to sports cars packed with horse power - good ideas need effective launches in order to have a successful start on the market. The 25hours locations are as diverse as the products unique. Be it big and grandiose or cosy and small - do you already have a brilliant idea and your breakthrough is within reach? Maybe you still need a little inspiration.



## press conference

Your press appearance really needs to make waves? To do this, not only the product has to be right, but also the venue. At our 25hours Hotels in Germany, Austria, and Switzerland, we offer personalised solutions for the perfect setting. Classic conference rooms with seating, cosy lounges with a fireplace or a panoramic view over the city - whatever suits your product or target groups best, we'll work together to host the perfect press conference.



## assessment centre

Let's get down to business. Which of the applicants is potentially the right candidate for a management role? Individual or group assessments, management audits, or an evaluation assessment centre - when discretion has the top priority, we're the right choice. Even just for a cosy get-together at one of our restaurants or bars - there is a personalised solution for all kinds of requests. And the possibilities are endless at the 25hours Hotels.



# event ideas

## album release

The new album: Check! The big day is here. Now, the big wide world should listen and recognise the true artistry. We have exactly the right locations for this - be it cosy and intimate or big and fabulous. For twenty, a hundred, or even hundreds of listeners. With a live set or a sound system with bass tubes and the perfect sound. We even have instruments available on site at some hotels. Just do your thing and win the audience over with your new album. We have everything you need and the perfect spaces for a flawless release party.



## casting

Your company is in its infancy and your new offices aren't ready yet? We would be happy to provide our rooms for castings and recruitment interviews. Whether it's on a small scale or somewhat larger. Be it individual hotel rooms, the lobbies, bars, or restaurants - we have the right venue for any casting event. Just click through to have a look or come and visit us in person. Many rooms can be adjusted as required to meet your exact needs.



## fotoshooting

The new lookbook for the coming season needs to be shot? The next edition of the magazine has a feature on Berlin? Zurich or Hamburg? The photographer is booked, but the matter of the right location hasn't been resolved? Our 25hours Hotels, with their individual hotel concepts, offer tailored spaces for photoshoots with a passion for detail. Whether it's in a bathtub with a view over the Vienna MuseumsQuartier, on the roof terrace at the 25hours Hotel Bikini Berlin with a view of chimpanzees and elephants, or in the colourful, urban world of the 25hours Hotel Frankfurt The Goldman in Frankfurt's east end. Our hotels are as diverse as the fashion and culture themselves.





# directions

17



## arriving on public transport

We are located just a 3-minute walk from the main entrance of the Santa Maria Novella train station. Turn right towards Piazza Santa Maria Novella, cross the square, take the second right and you have arrived!

From Florence's Amerigo Vespucci Airport, take tram no. 2 to the Central Station. There is a tram up to every 5 minutes. Tickets cost 1.50 EUR and can be purchased at the airport tram stop using the machines and paying by cash or card. From Florence's Amerigo Vespucci Airport, take Vola Bus to the stop near the Santa Maria Novella central station. The journey takes approximately 20 minutes and tickets cost 6 EUR.

## arriving by car

Take the A11/E76, Ponte all'Indiano viaduct, Via A. Canova, Viale Francesco Talenti and Viale Francesco Petrarca towards Via Romana in Florence. Continue along Via Romana. Bear left onto Via Maggio. Proceed along Piazza de' Frescobaldi, turn left onto Lungarno Guicciardini. Turn right onto Ponte alla Carraia. Turn left for Piazza Carlo Goldoni. At the roundabout, take the 3rd exit for Borgo Ognissanti. Turn right onto Via del Porcellana. Turn left onto Via Palazzuolo - you have reached your destination!

Attention: on the way here, you will have to pass a restricted traffic areas with cameras that can only be accessed by residents, but there won't be any problem if you park in our carpark.

# contact

25hours Hotel Piazza San Paolino  
Piazza di San Paolino, 1  
50123 Florence

p +39 055 29 66 911  
[events.sanpaolino@25hours-hotels.com](mailto:events.sanpaolino@25hours-hotels.com)